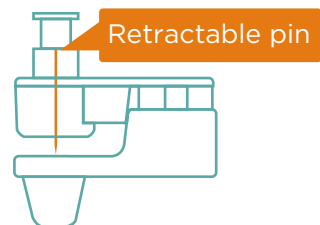


Click-pin tag

SECURING MERCHANDISE IN
JUST ONE CLICK!



Century's Click-pin tag is an innovative developed by our own R&D center. The pin and its (un)locking system are integrated in the tag, making it a very efficient and safe tool for the protection of fine apparel, accessories, light and thin fabric garments, bags and other high value products. The pin is retracted when the tag is not in use, but it remains in the tag structure which makes it easy to re-use the pin, pulling it out, just in one click to easily secure the merchandise that needs to be protected. The series Click-pin tags are available in AM, RF and a combination of AM or RF with RFID. It is a safe way to manipulate the pins for employees and to always have the best balanced numbers combination of tags and pins.

Features

▲ SAFE AND EASY TO STORE

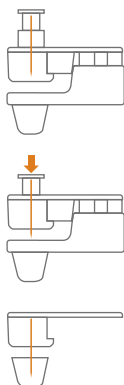
Storing pins and tags separately is a thing of the past with Click-pin tag, because of the pin being safely integrated in the tag.

▲ EASY TO USE

The one-click (un)locking system makes our tags very easy and quick to use.

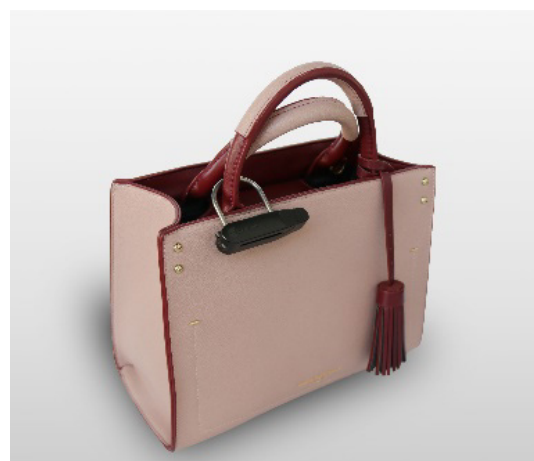
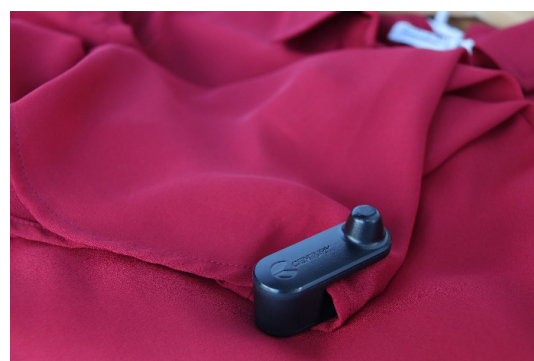
▲ FREQUENCIES

Available in AM, RF and a combination of AM or RF with RFID.








Applications

Apparel, Delicates, Denim, Outerwear, Sportswear, Swimwear, Intimates, Bags



Specifications

| Picture | Name | Code | Frequency | IC | Read range (EIRP:33DBM) | Size | Colour |
|--|----------------------------|---------|----------------------|--------|--|------------------|--------------------------------|
|  | Click-pin tag S | CE36111 | AM RF EAS+RFID | R6/R6P | US(902-928):Up to 2.5m EU(865-868):Up to 2.5m | 50.1*20.1*32.3mm | Black and customized* |
|  | Click-pin tag M | CE36112 | AM RF EAS+RFID | R6/R6P | US(902-928):Up to 2.5m EU(865-868):Up to 2.5m | 55.3*20.3*32.3mm | Black and gray /customized* |
|  | Click-pin tag L | CE36110 | AM RF EAS+RFID | R6/R6P | US(902-928):Up to 7m | 67.4*20.7*32.3mm | Black and gray /customized* |
|  | Click-pin tag with hook | T245 | AM RF | / | / | 65.5*51*17.5mm | Black and gray /customized* |
|  | Click-pin tag E | CE36114 | AM RF EAS+RFID | R6/R6P | US(902-928):Up to 5m EU(865-868):Up to 5m | 67*25*36.5mm | Black and gray /customized* |